

Botanical Name

Common Name

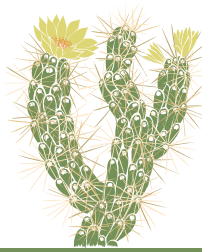
<i>Abutilon palmeri</i>	Palmer's Indian Mallow
<i>Adenostoma fasciculatum</i>	Chamise
<i>Arctostaphylos viridissima</i> 'White Cloud'	White Cloud Manzanita
<i>Arctostaphylos</i> sp.	Unknown Manzanita
<i>Arctostaphylos</i> sp.	Unknown Manzanita
<i>Baccharis pilularis</i> 'Pigeon Point'	Pigeon Point Coyote Brush
<i>Berberis nevini</i>	Nevin's Barberry
<i>Calliandra californica</i>	Red Fairyduster
<i>Ceanothus</i> 'Concha'	Concha Ceanothus
<i>Ceanothus</i> 'Siempre Blue'	Siempre Blue Ceanothus
<i>Ceanothus</i> 'Blue Jeans'	Blue Jeans Ceanothus
<i>Ceanothus</i> 'Ray Hartmann'	Ray Hartman Ceanothus
<i>Cercis occidentalis</i>	Western Redbud
<i>Chilopsis linearis</i>	Desert Willow
<i>Condea emoryi</i>	Desert Lavender
<i>Dendromecon rigida</i>	Bush Poppy
<i>Dudleya caespitosa</i>	Coast Dudleya
<i>Dudleya densiflora</i>	San Gabriel Mtns Dudleya
<i>Encelia californica</i>	Bush Sunflower
<i>Encelia farinosa</i>	Inciense
<i>Epilobium canum</i>	California Fuchsia
<i>Eriogonum cinerium</i>	Ashyleaf Buckwheat
<i>Eriogonum crocatum</i>	Saffron buckwheat
<i>Eriogonum fasciculatum</i>	California Buckwheat
<i>Eriogonum fasciculatum</i> 'Dana Point'	Dana Point Buckwheat
<i>Eriogonum giganteum</i>	St. Catherine's Lace
<i>Eriogonum grande</i> var. <i>rubescens</i>	Red-flowered Buckwheat
<i>Euphorbia xanti</i>	Baja Spurge
<i>Festuca idahoensis</i>	Idaho Fescue
<i>Frangula californica</i>	Coffeeberry
<i>Fremontodendron</i> 'Pacific Sunset'	Pacific Sunset Flannel Bush
<i>Galvezia juncea</i> 'Punta Banda'	Punta Banda Baja Bush Snapdragon
<i>Galvezia speciosa</i> 'Pink Panther'	Pink Panther Island Snapdragon
<i>Hyptis emoryi</i>	See Condea
<i>Isocoma menziesii</i>	Menzies' Goldenbush
<i>Justicia californica</i> (yellow)	Chuparosa
<i>Malva assurgentiflora</i>	Island Tree Mallow





Theodore Payne Foundation

2019 PLANT LIST | provided by homeowner
Garden 1 in Pasadena



NATIVE PLANT GARDEN TOUR

Botanical Name

Common Name

<i>Mimulus</i> 'Jelly Bean Orange'	Jelly Bean Orange Monkeyflower
<i>Parkinsonia</i> 'Desert Museum'	Desert Museum Palo Verde
<i>Penstemon palmeri</i>	Palmer's Penstemon
<i>Penstemon spectabilis</i>	Showy Penstemon
<i>Peritoma arborea</i>	Bladderpod
<i>Prunus andersonii</i>	Desert Peach
<i>Rhus integrifolia</i>	Lemonadeberry
<i>Ribes aureum</i> var. <i>gracillimum</i>	Golden Currant
<i>Salvia apiana</i>	White Sage
<i>Salvia</i> Bee's Bliss	Bee's Bliss Sage
<i>Salvia clevelandii</i>	Cleveland Sage
<i>Salvia leucophylla</i>	Purple Sage
<i>Salvia mellifera</i>	Black sage
<i>Salvia mellifera</i> 'Terra Seca'	Terra Seca Black Sage
<i>Salvia spathacea</i>	Hummingbird Sage
<i>Sphaeralcea ambigua</i>	Apricot Mallow
<i>Sphaeralcea ambigua</i> 'Louis Hamilton'	Louis Hamilton Apricot Mallow
<i>Trichostema lanatum</i>	Woolly Bluecurls
<i>Verbena lilacina</i>	Lilac verbena
<i>Vitis</i> 'Roger's Red'	Roger's Red California Grape



Theodore Payne Foundation for Wild Flowers & Native Plants
10459 Tuxford Street, Sun Valley, California 91352 | 818 768 1802

theodorepayne.org
nativeplantgardentour.org