

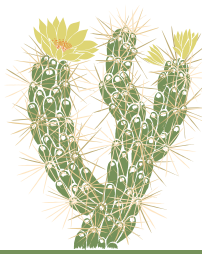
Botanical Name

Common Name

**Front Yard**

|   |   |
|---|---|
| <i>Achillea millefolium</i> 'Sonoma Coast'                      | Sonoma Coast Yarrow                         |
| <i>Arctostaphylos</i> 'Point Reyes'                             | Point Reyes Manzanita                       |
| <i>Aristida purpurea</i>  | Purple Three-Awn                            |
| <i>Armeria maritima</i> 'Alba'                                  | White Sea Thrift                            |
| <i>Carex tumulicola</i>   | Foothill Sedge                              |
| <i>Ceanothus</i> 'Diamond Heights'                              | Diamond Heights California Lilac            |
| <i>Ceanothus</i> 'Joyce Coulter'                                | Joyce Coulter California Lilac              |
| <i>Ceanothus</i> 'Ray Hartman'                                  | Ray Hartman California Lilac                |
| <i>Ceanothus</i> 'Yankee Point'                                 | Yankee Point California Lilac               |
| <i>Dudleya brittonii</i>  | Britton's Dudleya                           |
| <i>Dudleya farinosa</i>   | Powdery Live-forever                        |
| <i>Dudleya traskiae</i>   | Santa Barbara Live-forever                  |
| <i>Eriogonum grande</i> var. <i>rubescens</i>                   | Red-Flowered or San Miguel Island Buckwheat |
| <i>Eschscholzia californica</i>                                 | California Poppy                            |
| <i>Fragaria chiloensis</i>                                      | Beach or Sand Strawberry                    |
| <i>Galvezia speciosa</i>  | Island Snapdragon                           |
| <i>Heteromeles arbutifolia</i>                                  | Toyon                                       |
| <i>Heteromeles arbutifolia</i> 'Davis Gold'                     | Davis Gold Toyon                            |
| <i>Heuchera</i> 'Wendy'   | Wendy Coral Bells                           |
| <i>Iris douglasiana</i>   | Douglas Iris                                |
| <i>Juncus effus</i>   | Common Rush                                 |
| <i>Lewisia longipetala</i> 'White'                              | White Long-Petaled Lewisia                  |
| <i>Mahonia aquifolium</i>                                       | Oregon Grape                                |
| <i>Mahonia repens</i>   | Creeping Barberry                           |
| <i>Mimulus aurantiacus</i>                                      | Yellow Monkeyflower                         |
| <i>Mimulus bifidus</i> 'White'                                  | White Monkeyflower                          |
| <i>Muhlenbergia rigens</i>                                      | Deergrass                                   |
| <i>Myrica californica</i>                                       | Pacific Wax Myrtle                          |
| <i>Penstemon heterophyllus</i> 'Blue Springs'                   | Blue Springs Foothill Penstemon             |
| <i>Penstemon heterophyllus</i> 'Margarita BOP'                  | Margarita BOP Foothill Penstemon            |
| <i>Polystictum munitum</i>                                      | Western Sword Fern                          |
| <i>Quercus agrifolia</i>  | Coast Live Oak                              |
| <i>Quercus engelmannii</i>                                      | Engelmann Oak                               |
| <i>Rhamnus californica</i>                                      | Coffeeberry                                 |
| <i>Salvia</i> 'Bee's Bliss'                                     | Bee's Bliss Sage                            |
| <i>Salvia clevelandii</i>                                       | Cleveland sage                              |
| <i>Salvia spathacea</i>   | Hummingbird Sage                            |
| <i>Sisyrinchium bellum</i>                                      | Blue-eyed Grass                             |
| <i>Sisyrinchium bellum</i> 'North Coast'                        | North Coast Blue-eyed Grass                 |
| <i>Sisyrinchium bellum</i> 'San Simeon'                         | San Simeon Blue-eyed Grass                  |
| <i>Sisyrinchium californicum</i>                                | Yellow-eyed Grass                           |
| <i>Trichostema lanatum</i>                                      | Woolly Blue Curls                           |
| <i>Epilobium (Zauschneria) canum</i>                            | California Fuchsia                          |
| <i>Epilobium (Zauschneria) septentrionalis</i> 'Wayne's Silver' | Wayne's Silver California Fuchsia           |





Botanical Name

Common Name

**Backyard**

|  |                                  |
|--|----------------------------------|
| <i>Abutilon palmeri</i>                                    | Indian Mallow                    |
| <i>Achillea millefolium</i>                                | Common Yarrow                    |
| <i>Arctostaphylos</i> 'Emerald Carpet'                     | Emerald Carpet Manzanita         |
| <i>Arctostaphylos</i> 'Howard McMinn'                      | Howard McMinn Manzanita          |
| <i>Arctostaphylos</i> 'Sunset'                             | Sunset Manzanita                 |
| <i>Armeria martima</i> 'Alba'                              | White Sea Thrift                 |
| <i>Armeria martima</i> 'Pink'                              | Pink Sea Thrift                  |
| <i>Asclepias fascicularis</i>                              | Narrow-leaved Milkweed           |
| <i>Baccharis pularis</i> 'Pigeon Point'                    | Pigeon Point Dwarf Coyote Bush   |
| <i>Carex praegracilis</i>                                  | California Field Sedge           |
| <i>Carex tumulicola</i>                                    | Foothill Sedge                   |
| <i>Carpenteria californica</i>                             | Bush Anemone                     |
| <i>Ceanothus</i> 'Dark Star'                               | Dark Star Ceanothus              |
| <i>Ceanothus</i> 'Yankee Point'                            | Yankee Point Ceanothus           |
| <i>Deschampsia cespitosa</i>                               | Tufted Hairgrass                 |
| <i>Diplacus longiflorus</i> ( <i>Mimulus aurantiacus</i> ) | Yellow Monkeyflower              |
| <i>Diplicus</i> ( <i>Mimulus</i> ) <i>bifidus</i> 'White'  | White Monkeyflower               |
| <i>Dudleya brittonii</i>                                   | Britton's Dudleya                |
| <i>Dudleya palmeri</i>                                     | Palmer's Live-forever            |
| <i>Epilobium</i> ( <i>Zauschneria</i> ) <i>canum</i>       | California Fuchsia               |
| <i>Eriogonum fasciculatum</i>                              | California Buckwheat             |
| <i>Eschscholzia californica</i>                            | California Poppy                 |
| <i>Festuca californica</i>                                 | California Fescue                |
| <i>Fragaria chiloensis</i>                                 | Beach or Sand Strawberry         |
| <i>Galvezia speciosa</i>                                   | Island Snapdragon                |
| <i>Heuchera</i> 'Wendy'                                    | Wendy Coral Bells                |
| <i>Iris douglasiana</i>                                    | Douglas Iris                     |
| <i>Juncus patens</i> 'Elk Blue'                            | Elk Blue California Gray Rush    |
| <i>Monardella villosa</i>                                  | Coyote Mint                      |
| <i>Myrica californica</i>                                  | Pacific Wax Myrtle               |
| <i>Penstemon eatonii</i>                                   | Firecracker Penstemon            |
| <i>Penstemon heterophyllus</i> 'Margarita BOP'             | Margarita BOP Foothill Penstemon |
| <i>Quercus engelmannii</i>                                 | Engelmann Oak                    |
| <i>Romneya coulteri</i>                                    | Matilija Poppy                   |
| <i>Salvia</i> 'Bee's Bliss'                                | Bee's Bliss Sage                 |
| <i>Salvia clevelandii</i>                                  | Cleveland sage                   |
| <i>Salvia spathacea</i>                                    | Hummingbird Sage                 |
| <i>Sisyrinchium bellum</i>                                 | Blue-eyed Grass                  |
| <i>Verbena iliciana</i> 'De la Mina'                       | De La Mina Lilac Verbena         |

