

Botanical Name

Common Name

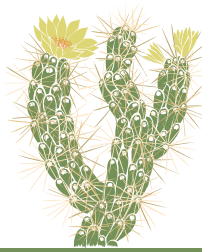
<i>Abutilon palmeri</i>	Palmer's Indian Mallow
<i>Achillea millefolium</i>	Yarrow
<i>Arctostaphylos</i> 'Sunset'	Sunset Manzanita
<i>Artemisia tridentata</i> ssp. <i>tridentata</i>	Great Basin Sagebrush
<i>Baccharis pilularis</i> ssp. <i>consanguinea</i> 'Pozo Surf'	Pozo Surf Coyote Brush
<i>Baileya multiradiata</i>	Desert Marigold
<i>Bouteloua gracilis</i>	Blue Grama Grass
<i>Calliandra californica</i>	Red Fairyduster
<i>Ceanothus cordulatus</i>	Mountain Whitethorn
<i>Ceanothus impressus</i> var. <i>impressus</i> 'Vandenberg'	Vandenberg Ceanothus
<i>Parkinsonia</i> 'Desert Museum'	Desert Museum Palo Verde
<i>Chilopsis linearis</i>	Desert Willow
<i>Clarkia unguiculata</i>	Elegant Clarkia
<i>Dudleya attenuata</i>	Orcutt's Dudleya
<i>Dudleya brittoni</i>	Britton's Dudleya
<i>Arctostaphylos hookeri</i> 'Monterey Carpet'	Sea Lettuce
<i>Dudleya pulverulenta</i>	Chalk Dudleya
<i>Elymus triticoides</i> 'Grey Dawn'	Grey Dawn Creeping Wild Rye
<i>Epilobium canum</i> 'Catalina'	Catalina California fuchsia
<i>Eriogonum crocatum</i>	Conejo Buckwheat
<i>Eriogonum arborescens</i>	Santa Cruz Island Buckwheat
<i>Eriogonum giganteum</i>	St. Catherine's Lace
<i>Eriophyllum nevinii</i>	Catalina Silverlace
<i>Erythranthe cardinalis</i>	Scarlet Monkeyflower
<i>Eschscholzia californica</i>	California Poppy
<i>Euphorbia misera</i>	Cliff Spurge
<i>Euphorbia xanti</i>	Baja Spurge
<i>Festuca idahoensis</i> 'Clearwater Blue'	Clearwater Blue Idaho Fescue
<i>Festuca idahoensis</i> 'Warren Peak'	Warren Peak Idaho Fescue
<i>Fouquieria splendens</i>	Ocotillo
<i>Fremontodendron</i> 'Ken Taylor'	Ken Taylor Flannelbush
<i>Heuchera</i> 'Rosada'	Rosada Coral Bells
<i>Heuchera maxima</i>	Island Alumroot
<i>Iris douglasiana</i> 'Canyon Snow'	Canyon Snow Iris
<i>Isocoma menziesii</i>	Goldenbush
<i>Juncus effusus</i>	Common Rush
<i>Juncus patens</i>	Spreading Rush
<i>Juncus textilis</i>	Basket Rush





Theodore Payne Foundation

2019 PLANT LIST | provided by homeowner
Garden 17 in West Adams



NATIVE PLANT GARDEN TOUR

Botanical Name

Common Name

<i>Leymus condensatus</i> 'Canyon Prince'	Canyon Prince Giant Wild Rye
<i>Leymus triticoides</i> 'Gray Dawn'	Gray Dawn Creeping Wild Rye
<i>Malacothamnus jonesii</i>	Jones's Bush Mallow
<i>Mentzelia lindleyi</i>	Blazing Star
<i>Muhlenbergia rigens</i>	Deergrass
<i>Nemophila menziesii</i>	Baby Blue Eyes
<i>Penstemon</i> 'Margaita BOP'	Margarita BOP Foothill Penstemon
<i>Perityle incana</i>	Guadalupe Island Rock Daisy
<i>Quercus lobata</i>	Valley Oak
<i>Rhamnus californica</i> 'Mound San Bruno'	Mound San Bruno Coffeeberry
<i>Romneya coulteri</i>	Matilija Poppy
<i>Salvia clevelandii</i>	Cleveland Sage
<i>Salvia clevelandii</i> 'Aromas'	Aromas Cleveland Sage
<i>Salvia clevelandii</i> 'Arroyo Azul'	Arroyo Azul Cleveland Sage
<i>Salvia mellifera</i> 'Terra Seca'	Terra Seca Black Sage
<i>Sisyrinchium bellum</i>	Blue-eyed Grass
<i>Sphaeralcea fulva</i> 'La Luna'	La Luna Desert Mallow
<i>Symphotrichum chilense</i>	California Aster
<i>Vitis</i> 'Roger's Red'	Roger's Red Grape



Theodore Payne Foundation for Wild Flowers & Native Plants
10459 Tuxford Street, Sun Valley, California 91352 | 818 768 1802

theodorepayne.org
nativeplantgardentour.org