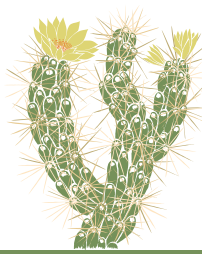


Botanical Name

Common Name

<i>Acalypha californica</i>	California Copperleaf
<i>Achillea millefolium</i>	Common Yarrow
<i>Adiantum jordanii</i>	California Maidenhair Fern
<i>Agave deserti</i>	Desert Agave
<i>Allium falcifolium</i>	Scythe Leaf Onion
<i>Allium haematochiton</i>	Red-Skinned Onion
<i>Allium howellii</i> var. <i>clokeyi</i>	Mt. Pinos Onion
<i>Allium unifolium</i>	One-Leaf Onion
<i>Anemopsis californica</i>	Yerba Mansa
<i>Aquilegia formosa</i>	Western Columbine
<i>Arbutus menziesii</i>	Madrone
<i>Arctostaphylos</i> 'Baby Bear'	Baby Bear Manzanita
<i>Arctostaphylos</i> 'Emerald Carpet'	Emerald Carpet Manzanita
<i>Arctostaphylos bakeri</i> 'Louis Edmunds'	Louis Edmunds Manzanita
<i>Arctostaphylos glauca</i>	Big Berry Manzanita
<i>Arctostaphylos hookeri</i> 'Monterey Carpet'	Monterey Carpet Manzanita
<i>Arctostaphylos manzanita</i> 'Byrd Hill'	Byrd Hill Manzanita
<i>Arctostaphylos manzanita</i> 'Dr. Hurd'	Dr. Hurd Manzanita
<i>Aristida purpurea</i>	Purple Three-Awn
<i>Armeria maritima</i> 'Rubrifolia'	Rubrifolia Sea Thrift
<i>Artemisia californica</i>	California Sagebrush
<i>Artemisia californica</i> 'Canyon Grey'	Canyon Grey California Sagebrush
<i>Artemisia ludoviciana</i>	Silver Wormwood
<i>Asclepias fascicularis</i>	Narrow-Leaf Milkweed
<i>Aster</i> —see <i>Symphyotrichum</i>	
<i>Berberis</i> ( <i>Mahonia</i> ) <i>aquifolium</i> var. <i>repens</i>	Creeping Oregon Grape
<i>Bloomeria crocea</i>	Golden Stars
<i>Brodiaea californica</i>	California Brodiaea
<i>Brodiaea coronaria</i>	Crown Brodiaea
<i>Brodiaea elegans</i>	Harvest Brodiaea
<i>Brodiaea kinkiensis</i>	San Clemente Island Brodiaea
<i>Brodiaea leptandra</i>	Narrow-Flowered California Brodiaea
<i>Brodiaea minor</i>	Dwarf Brodiaea
<i>Brodiaea pallida</i>	Chinese Camp Brodiaea
<i>Brodiaea sierrae</i>	Sierra Foothills Brodiaea
<i>Calandrinia ciliata</i>	Redmaids
<i>Calliandra californica</i>	Baja or Red Fairyduster
<i>Calliandra eriophylla</i>	Pink Fairyduster
<i>Calochortus albus</i> var. <i>albus</i>	Fairy Lantern, Globe Lily (Sierra Form)
<i>Calochortus albus</i> var. <i>rubellus</i>	Pink Fairy Lantern
<i>Calochortus amabilis</i>	Golden Fairy Lantern, Diogenes' Lantern
<i>Calochortus amoenus</i>	Purple Fairy Lantern



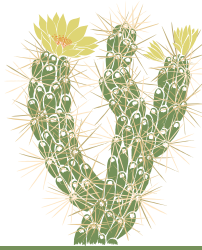


Botanical Name

Common Name

<i>Calochortus argillosus</i>	Clay Mariposa Lily (Southern Form)
<i>Calochortus argillosus</i> -Central Form	Clay Mariposa Lily (Central Form)
<i>Calochortus catalinae</i>	Catalina Mariposa Lily
<i>Calochortus clavatus</i> var. <i>pallidus</i>	Pale Yellow Mariposa Lily
<i>Calochortus clavatus</i> var. <i>avius</i>	Pleasant Valley Mariposa Lily
<i>Calochortus clavatus</i> var. <i>clavatus</i>	Clubhair Mariposa Lily
<i>Calochortus clavatus</i> var. <i>gracilis</i>	Slender Mariposa Lily
<i>Calochortus greenei</i>	Greene's Mariposa Lily
<i>Calochortus luteus</i>	Yellow Mariposa Lily
<i>Calochortus luteus</i> 'Golden Orb'	Golden Orb Mariposa Lily
<i>Calochortus monophyllus</i>	Yellow Star Tulip (Cat's Ears)
<i>Calochortus palmeri</i> var. <i>palmeri</i>	Palmer's Mariposa Lily
<i>Calochortus palmeri</i> var. <i>munzii</i>	Munz's Mariposa Lily
<i>Calochortus plummerae</i>	Plummer's Mariposa Lily
<i>Calochortus pulchellus</i>	Mt. Diablo Fairy Lantern
<i>Calochortus splendens</i>	Splendid Mariposa Lily
<i>Calochortus striatus</i>	Alkali Mariposa Lily
<i>Calochortus superbus</i>	Yellow Mariposa Lily
<i>Calochortus uniflorus</i>	Large Flowered Star Tulip
<i>Calochortus venustus</i> (burgundy form)	Butterfly Mariposa Lily (burgundy form)
<i>Calochortus venustus</i> (Contra Costa County)	Butterfly Mariposa Lily (Contra Costa Co.)
<i>Calochortus venustus</i> (Napa)	Butterfly Mariposa Lily (Napa)
<i>Calochortus venustus</i> (purple form)	Butterfly Mariposa Lily (purple form)
<i>Calochortus venustus</i> (white form)	Butterfly Mariposa Lily (white form)
<i>Calochortus venustus</i> var. <i>sanguineus</i>	Red Butterfly Mariposa Lily
<i>Calochortus vestae</i>	Coast Range Mariposa Lily
<i>Calochortus weedii</i> var. <i>intermedius</i>	Weed's Mariposa Lily (Intermediate Mariposa)
<i>Calochortus weedii</i> var. <i>vestus</i>	Weed's Mariposa Lily, Late Flowered Mariposa
<i>Calochortus weedii</i> var. <i>weedii</i>	Weed's Mariposa Lily
<i>Calycanthus occidentalis</i>	Spice Bush
<i>Calystegia macrostegia</i>	Island Morning Glory
<i>Camissonia</i> —see <i>Camissoniopsis</i>	
<i>Camissoniopsis</i> ( <i>Camissonia</i> ) <i>cheiranthifolia</i> ssp. <i>cheiranthifolia</i>	Beach Suncups
<i>Camissoniopsis</i> ( <i>Camissonia</i> ) <i>cheiranthifolia</i> ssp. <i>suffruticosa</i>	Beach Evening Primrose
<i>Carpenteria californica</i>	Bush Anemone
<i>Ceanothus</i> 'Concha'	Concha Ceanothus
<i>Ceanothus</i> 'Dark Star'	Dark Star Ceanothus
<i>Ceanothus</i> 'Ray Hartman'	Ray Hartman Ceanothus
<i>Ceanothus arboreus</i>	Catalina Ceanothus
<i>Cercocarpus betuloides</i>	Mountain Mahogany
<i>Clarkia amoena</i>	Farewell-To-Spring
<i>Clarkia bottae</i>	Botta's Clarkia, Punchbowl Godetia



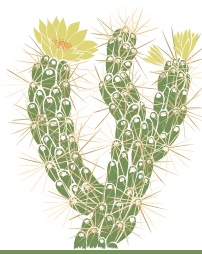


Botanical Name

Common Name

<i>Clarkia purpurea</i>	Purple Clarkia
<i>Clarkia unguiculata</i>	Elegant Clarkia
<i>Clinopodium (Satureja) douglasii</i>	Yerba Buena
<i>Coreopsis</i> —see <i>Leptosyne</i>	
<i>Datura wrightii</i>	Sacred Datura, Jimsonweed
<i>Dichelostemma capitatum</i>	Blue Dicks
<i>Dichelostemma congestum</i>	Forktooth Ookow
<i>Dichelostemma ida-maia</i>	Firecracker Flower
<i>Dichelostemma multiflorum</i>	Roundtooth Ookow
<i>Dichelostemma volubile</i>	Twining Brodiaea
<i>Diplacus (Mimulus) 'Jelly Bean' series</i>	Jelly Bean series Monkeyflowers
<i>Diplacus (Mimulus) aurantiacus</i>	Sticky Monkeyflower
<i>Diplacus (Mimulus) aurantiacus</i> var. <i>grandiflorus</i> ( <i>M. bifidus</i> )	Cutpetal or Two-lobed Monkeyflower
<i>Diplacus (Mimulus) aurantiacus</i> var. <i>parviflorus</i> ( <i>M. flemingii</i> )	Island Bush Monkeyflower
<i>Diplacus (Mimulus) aurantiacus</i> var. <i>pubescens</i> ( <i>M. longiflorus</i> )	Southern Bush Monkeyflower
<i>Diplacus (Mimulus) aurantiacus</i> var. <i>puniceus</i>	Southern Red Monkeyflower
<i>Diplacus (Mimulus) sp. and cvs.</i>	Monkeyflowers - other various/unknowns
<i>Dudleya attenuata</i>	Tapertip Liveforever
<i>Dudleya brittonii</i>	Britton's Liveforever
<i>Dudleya caespitosa</i>	Coast Dudleya
<i>Dudleya cymosa</i>	Canyon Liveforever
<i>Dudleya edulis</i>	Fingertips
<i>Dudleya lanceolata</i>	Lance-Leaf Dudleya
<i>Dudleya pulverulenta</i>	Chalk Dudleya
<i>Elymus (Leymus) condensatus</i>	Giant Wild Rye
<i>Encelia californica</i>	California Bush Sunflower
<i>Encelia farinosa</i>	Brittlebush, Incienso
<i>Epilobium (Zauschneria) 'Calistoga'</i>	Calistoga California Fuchsia
<i>Epilobium (Zauschneria) 'Catalina'</i>	Catalina California Fuchsia
<i>Epilobium (Zauschneria) canum</i>	California Fuchsia
<i>Epipactis gigantea</i>	Stream Orchid
<i>Epipactis gigantea</i> 'Serpentine Night'	Serpentine Night Stream Orchid
<i>Equisetum kansanum</i>	Dwarf Horsetail Rush
<i>Eriogonum crocatum</i>	Saffron or Conejo Buckwheat
<i>Eriogonum fasciculatum</i>	California Buckwheat
<i>Eriogonum fasciculatum</i> 'Bruce Dickinson'	Bruce Dickinson California Buckwheat
<i>Eriogonum fasciculatum</i> 'Theodore Payne'	Theodore Payne California Buckwheat
<i>Eriogonum grande</i> var. <i>rubescens</i>	Red-Flowered or San Miguel Island Buckwheat
<i>Eriophyllum confertiflorum</i> ssp. <i>confertiflorum</i>	Golden Yarrow
<i>Erysimum sp.?</i>	Unknown Wallflower
<i>Erythranthe (Mimulus) guttatus</i>	Seep Monkeyflower
<i>Eschscholzia caespitosa</i>	Foothill Poppy





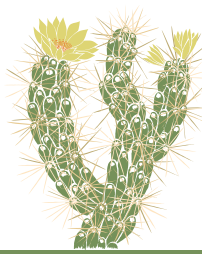
Botanical Name

Common Name

<i>Eschscholzia californica</i>	California Poppy
<i>Eschscholzia californica</i> var. <i>maritima</i>	California Poppy (Coastal form)
<i>Euphorbia misera</i>	Cliff Spurge
<i>Fallugia paradoxa</i>	Apache Plume
<i>Festuca rubra</i>	Creeping Red Fescue
<i>Fragaria chiloensis</i>	Beach Strawberry
<i>Fragaria vesca</i>	Wood Strawberry
<i>Fritillaria affinis</i> var. <i>affinis</i> ( <i>F. lanceolata</i> )	Checker Lily
<i>Fritillaria biflora</i>	Chocolate Lily
<i>Fritillaria biflora</i> x <i>purdyi</i>	Chocolate Lily Hybrid
<i>Galvezia</i> —see <i>Gambelia</i>	
<i>Gilia capitata</i>	Globe Gilia
<i>Gilia tricolor</i>	Bird's Eye Gilia
<i>Grindelia camporum</i>	Gumweed
<i>Grindelia stricta</i> var. <i>platyphylla</i>	Gumweed
<i>Heteromeles arbutifolia</i>	Toyon
<i>Heuchera</i> 'Wendy'	Wendy Coral Bells
<i>Heuchera</i> cvs.	Heuchera cultivars and hybrids
<i>Heuchera maxima</i>	Island Alumroot
<i>Iris</i> 'Canyon Snow'	Canyon Snow Iris
<i>Iris douglasiana</i> and Pacific Coast hybrids	Douglas Iris and PCH Hybrids
<i>Juncus xiphioides</i>	Iris-Leaved Rush
<i>Keckiella cordifolia</i>	Heart-Leaf Keckiella
<i>Lasthenia californica</i>	Goldfields
<i>Lasthenia glabrata</i>	Yellow-Ray Goldfields
<i>Layia platyglossa</i>	Tidy Tips
<i>Lepechinia fragrans</i>	Fragrant Pitcher Sage
<i>Leptosyne</i> ( <i>Coreopsis</i> ) <i>gigantea</i>	Giant Coreopsis
<i>Lewisia cotyledon</i>	Cliff Maids
<i>Lewisia cotyledon</i> cvs.	Lewisia cultivars and hybrids
<i>Leymus</i> —see <i>Elymus</i>	
<i>Limnanthes alba</i>	White Meadowfoam
<i>Linanthus grandiflorus</i>	Mountain Phlox
<i>Linum lewisii</i>	Blue Flax
<i>Lupinus bicolor</i>	Miniature Lupine
<i>Lupinus latifolius</i> var. <i>parishii</i>	Parish's Lupine
<i>Lupinus succulentus</i>	Arroyo Lupine
<i>Lupinus truncatus</i>	Collared Annual Lupine
<i>Lyonothamnus floribundus</i> ssp. <i>aspleniifolius</i>	Santa Cruz Island Ironwood
<i>Mahonia</i> —see <i>Berberis</i>	
<i>Malacothamnus fasciculatus</i> 'Casitas'	Casitas Chaparral Mallow
<i>Mentzelia lindleyi</i>	Lindley's Blazing Star





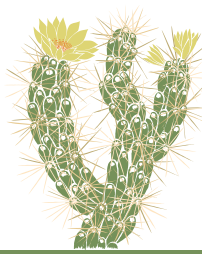


Botanical Name

Common Name

<i>Mimulus</i> —see <i>Diplacus</i> , <i>Erythranthe</i>	
<i>Monardella odoratissima</i>	Desert Mint, Mountain Pennyroyal
<i>Monardella villosa</i>	Coyote Mint
<i>Monardella villosa</i> 'Russian River'	Russian River Coyote Mint
<i>Monardella villosa</i> ( <i>M. antonina</i> )	San Antonio Hills Monardella
<i>Muhlenbergia rigens</i>	Deergrass
<i>Nassella</i> —see <i>Stipa</i>	
<i>Odontostomum hartwegii</i>	Hartweg's Doll's Lily
<i>Penstemon centranthifolius</i>	Scarlet Bugler
<i>Penstemon palmeri</i>	Palmer's Penstemon
<i>Penstemon pseudospectabilis</i>	Desert Penstemon
<i>Penstemon speciosus</i>	Royal Penstemon
<i>Penstemon spectabilis</i>	Showy Penstemon
<i>Phacelia cicutaria</i>	Caterpillar Phacelia
<i>Phacelia tanacetifolia</i>	Tansy-Leaf or Lacy Phacelia
<i>Phyla nodiflora</i>	Turkey Tangle Frogfruit, Common Lippia
<i>Plantago subnuda</i>	Tall Coastal Plantain
<i>Platanus racemosa</i>	California Sycamore
<i>Polystichum munitum</i>	Western Sword Fern
<i>Prunus ilicifolia</i> ssp. <i>lyonii</i>	Catalina Cherry
<i>Pycnanthemum californicum</i>	California Mint
<i>Rhus integrifolia</i>	Lemonade Berry
<i>Rhus ovata</i>	Sugarbush
<i>Ribes aureum</i> var. <i>gracillimum</i>	Golden Currant
<i>Ribes californicum</i>	Hillside Gooseberry
<i>Ribes malvaceum</i>	Chaparral Currant
<i>Ribes sanguineum</i> 'White Icicle'	White Icicle Red-flowering Currant
<i>Ribes sanguineum</i> var. <i>glutinosum</i> or <i>R. sanguineum</i> var. <i>glutinosum</i> 'Mesa Rose'	Pink-flowering Currant or Mesa Rose Pink-Flowering Currant
<i>Ribes viburnifolium</i>	Evergreen Currant, Catalina Perfume
<i>Salvia</i> 'Allen Chickering'	Allen Chickering Sage
<i>Salvia</i> 'Dara's Choice'	Dara's Choice Creeping Sage
<i>Salvia apiana</i>	White Sage
<i>Salvia clevelandii</i>	Cleveland Sage
<i>Salvia columbariae</i>	Chia
<i>Salvia leucophylla</i> 'Bee's Bliss'	Bee's Bliss Purple Sage
<i>Salvia leucophylla</i> 'Figueroa'	Figueroa Purple Sage
<i>Salvia leucophylla</i> 'Point Sal'	Point Sal Purple Sage
<i>Salvia mellifera</i> 'Terra Seca'	Terra Seca Black Sage
<i>Salvia sonomensis</i> 'Mrs. Beard'	Mrs. Beard Sonoma Sage
<i>Salvia spathacea</i> & cvs	Hummingbird Sage and cultivars
<i>Sambucus nigra</i> ssp. <i>caerulea</i> ( <i>S. mexicana</i> )	Blue or Mexican Elderberry
<i>Satureja</i> —see <i>Clinopodium</i>	





**Botanical Name**

**Common Name**

<i>Sisyrinchium bellum</i>	Blue-eyed Grass
<i>Sisyrinchium californicum</i>	Yellow-eyed Grass
<i>Sphaeralcea ambigua</i> 'Louis Hamilton'	Louis Hamilton Apricot Mallow
<i>Sphaeralcea ambigua</i> & cvs.	Apricot Mallow and cultivars
<i>Stachys ajugoides</i> 'Persnickety Pink'	Persnickety Pink Hedge Nettle
<i>Stachys chamissonis</i>	Coast Hedge Nettle
<i>Stipa (Nassella) cernua</i>	Nodding Needlegrass
<i>Stipa (Nassella) lepida</i>	Foothill Needlegrass
<i>Stipa (Nassella) pulchra</i>	Purple Needlegrass
<i>Symphoricarpos albus</i> ssp. <i>laevigatus</i>	Canyon Snowberry
<i>Trichostema</i> 'Midnight Magic'	Midnight Magic Woolly Blue Curls Hybrid
<i>Trichostema lanatum</i>	Woolly Bluecurls
<i>Triteleia</i> 'Silver Queen'	Silver Queen Triteleia
<i>Triteleia bridgesii</i>	Bridge's Brodiaea
<i>Triteleia clementina</i>	San Clemente Island Brodiaea
<i>Triteleia hyacinthina</i>	White Brodiaea
<i>Triteleia ixioides</i> ssp. <i>anilina</i>	Prettyface
<i>Triteleia ixioides</i> ssp. <i>scabra</i>	Prettyface, Foothill Triteleia
<i>Triteleia laxa</i> ssp. & cvs.	Ithuriel's Spear
<i>Triteleia lilacina</i>	Lilac Prettyface
<i>Triteleia peduncularis</i>	Marsh Triteleia
<i>Umbellularia californica</i>	California Bay Laurel
<i>Verbena lilacina</i>	Lilac Verbena
<i>Vitis californica</i>	California Wild Grape
<i>Zauschneria</i> —see <i>Epilobium</i>	

