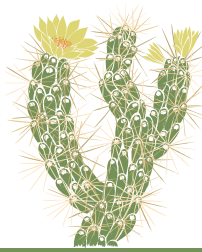




Theodore Payne Foundation

2019 PLANT LIST | provided by homeowner
Garden 2 in Pasadena



NATIVE PLANT GARDEN TOUR

Botanical Name

Common Name

Front Yard

<i>Epilobium canum</i>	California Fuchhia
<i>Eriogonum grande</i> var. <i>rubescens</i>	Red-Flowered Buckwheat
<i>Frangula (Rhamnus) californica</i>	Coffeeberry
<i>Frangula (Rhamnus) 'Leatherleaf'</i>	Leatherleaf Coffeeberry

Courtyard

<i>Adiantum capillus-veneris</i>	Southern Maidenhair Fern
<i>Frangula (Rhamnus) 'Ed Holmes'</i>	Ed Holmes Coffeeberry
<i>Chilopsis linearis</i>	Desert Willow
<i>Vitis californica</i> 'Roger's Red'	Roger's Red Grape
<i>Woodwardia fimbriata</i>	Giant Chain Fern

Backyard

<i>Abutilon palmeri</i>	Indian Mallow
<i>Aesculus californica</i>	California Buckeye
<i>Arctostaphylos</i> 'Dr. Hurd'	Dr. Hurd Manzanita
<i>Baileya multiradiata</i>	Desert Marigold
<i>Carex pansa</i>	Sand Dune Sedge
<i>Carpenteria californica</i>	Bush Anemone
<i>Clinopoidum (Satureja) douglasii</i>	Yerba Buena
<i>Heteromeles</i> 'Davis Gold'	Davis Gold Toyon
<i>Iris</i> 'Pacific Coast Hybrid'	Pacific Coast Hybrid Iris
<i>Penstemon</i> 'Margarita BOP'	Margarita BOP Penstemon

Pots

<i>Eriogonum arborescens</i>	Santa Cruz Island Buckwheat
<i>Sphaeralcea ambigua</i>	Apricot Mallow



Theodore Payne Foundation for Wild Flowers & Native Plants
10459 Tuxford Street, Sun Valley, California 91352 | 818 768 1802

theodorepayne.org
nativeplantgardentour.org