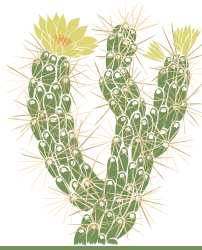




Theodore Payne Foundation

2019 PLANT LIST | provided by homeowner  
Garden 21 in Palms



# NATIVE PLANT GARDEN TOUR

**Botanical Name**

**Common Name**

<i>Arctostaphylos</i> 'Howard McMinn'	Howard McMinn Manzanita
<i>Artemisia californica</i>	California Sagebrush
<i>Artemisia californica</i> 'Canyon Grey'	Canyon Grey California Sagebrush
<i>Asclepias fascicularis</i>	Narrow-leaf Milkweed
<i>Baccharis pilularis</i> 'Twin Peaks #2'	Twin Peaks #2 Dwarf Coyote Brush
<i>Epilobium</i> 'John Bixby'	John Bixby California Fuchsia
<i>Epilobium</i> 'Liz Parsons'	Liz Parsons California Fuchsia
<i>Eriogonum arborescens</i>	Santa Cruz Island Buckwheat
<i>Eriogonum crocatum</i>	Conejo or Saffron Buckwheat
<i>Eriogonum fasciculatum</i> 'Theodore Payne'	Theodore Payne California Buckwheat
<i>Eschscholzia californica</i>	California Poppy
<i>Heteromeles arbutifolia</i>	Toyon
<i>Iris douglasiana</i>	Douglas Iris
<i>Juncus patens</i>	Spreading Rush
<i>Penstemon heterophyllus</i> 'Margarita BOP'	Margarita BOP Foothill Penstemon
<i>Prunus ilicifolia</i> ssp. <i>lyonii</i>	Catalina Cherry
<i>Rhus integrifolia</i>	Lemonade Berry
<i>Salvia leucophylla</i> 'Point Sal Spreader'	Point Sal Spreader Purple Sage
<i>Sisyrinchium bellum</i>	Blue-eyed Grass
<i>Sisyrinchium bellum</i> 'Fort Bragg'	Fort Bragg Blue-eyed Grass
<i>Sphaeralcea ambigua</i> var. <i>ambigua</i>	Apricot Mallow



Theodore Payne Foundation for Wild Flowers & Native Plants  
10459 Tuxford Street, Sun Valley, California 91352 | 818 768 1802

theodorepayne.org  
nativeplantgardentour.org