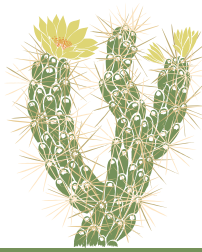




Theodore Payne Foundation

2019 PLANT LIST | provided by homeowner  
Garden 22 in Culver City



# NATIVE PLANT GARDEN TOUR

**Botanical Name**

**Common Name**

<i>Abutilon palmeri</i>	Palmer's Indian Abutilon
<i>Achillea millefolium</i>	Yarrow
<i>Ceanothus thrysiflorus</i> 'Skylark'	Skylark Ceanothus
<i>Parkinsonia florida</i> ( <i>Cercidium floridum</i> )	Blue Palo Verde
<i>Cercis occidentalis</i>	Western Redbud
<i>Chilopsis linearis</i>	Desert Willow
<i>Epilobium canum</i>	California Fuchsia
<i>Eriogonum arborescens</i>	Santa Cruz Island Buckwheat
<i>Eriogonum giganteum</i>	St Catherine's Lace
<i>Fragaria chiloensis</i>	Beach or Coast Strawberry
<i>Galvezia speciosa</i>	Island Snapdragon
<i>Heuchera maxima</i>	Island Alum Root
<i>Elymus (Leymus) condensatus</i> 'Canyon Prince'	Canyon Prince Giant Wild Rye
<i>Monardella villosa</i>	Coyote Mint
<i>Penstemon</i> 'Margarita BOP'	Margarita BOP Foothill Penstemon
<i>Rhamnus californica</i>	Coffeeberry
<i>Romneya coulteri</i>	Matilija Poppy
<i>Sisyrinchium bellum</i>	Blue-eyed Grass
<i>Sphaeralcea ambigua</i>	Apricot Mallow
<i>Verbena lilacina</i>	Lilac Verbena



Theodore Payne Foundation for Wild Flowers & Native Plants  
10459 Tuxford Street, Sun Valley, California 91352 | 818 768 1802

[theodorepayne.org](http://theodorepayne.org)  
[nativeplantgardentour.org](http://nativeplantgardentour.org)