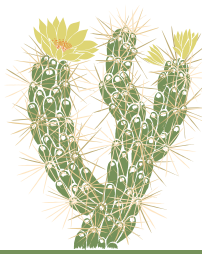


Botanical Name

Common Name

<i>Achillea millefolium</i>	Yarrow
<i>Agrostis pallens</i>	Bent Grass
<i>Alnus rhombifolia</i>	White Alder
<i>Aquilegia formosa</i>	Western Columbine
<i>Arctostaphylos</i> 'John Dourley'	John Dourley Manzanita
<i>Arctostaphylos densiflora</i> 'Howard McMinn'	Howard McMinn Manzanita
<i>Arctostaphylos insularis</i> 'Canyon Sparkles'	Canyon Sparkles Manzanita
<i>Artemisia californica</i>	California Sagebrush
<i>Artemisia californica</i> 'Montara'	Montara California Sagebrush
<i>Artemisia douglasiana</i>	Mugwort
<i>Artostaphylos pacifica</i>	Pacific Manzanita
<i>Asclepias fascicularis</i>	Narrow-leafed Milkweed
<i>Baccharis pilularis</i> 'Pigeon Point'	Pigeon Point Dwarf Coyote Brush
<i>Baccharis pilularis</i> 'Twin Peaks No. 2'	Twin Peaks No. 2 Dwarf Coyote Brush
<i>Berberis aquifolium</i> var. <i>repens</i>	Creeping Barberry
<i>Calocedrus decurrens</i>	Incense Cedar
<i>Calycanthus occidentalis</i>	Spicebush
<i>Camissoniopsis cheiranthifolia</i>	Beach Suncups
<i>Carex pansa</i>	Sand Dune Sedge
<i>Carpenteria californica</i>	Bush Anemone
<i>Ceanothus</i> 'Frosty Blue'	Frosty Blue Ceanothus
<i>Ceanothus</i> 'Ray Hartman'	Ray Hartman Ceanothus
<i>Ceanothus thrysiflorus</i> var. <i>griseus</i> 'Yankee Point'	Yankee Point Ceanothus
<i>Cercis occidentalis</i>	Western Redbud
<i>Cercocarpus betuloides</i> var. <i>blancheae</i>	Island Mountain Mahogany
<i>Chlorogalum pomeridianum</i>	Soap Plant
<i>Dendromecon harfordii</i>	Island Bush Poppy
<i>Dudleya brittonii</i>	Britton's Dudleya
<i>Dudleya edulis</i>	Fingertips
<i>Dudleya farinosa</i>	Bluff Lettuce
<i>Ericameria ericoides</i>	Mock Heather
<i>Erigeron glaucus</i> 'Ron's Pink'	Ron's Pink Seaside Daisy
<i>Erigeron glaucus</i> 'Wayne Roderick'	Wayne Roderick Seaside Daisy
<i>Eriogonum cinereum</i>	Ashy-leaf Buckwheat
<i>Eriogonum fasciculatum</i>	California Buckwheat
<i>Eriogonum fasciculatum</i> 'Dana Point'	Dana Point California Buckwheat
<i>Eriogonum fasciculatum</i> 'Theodore Payne'	Theodore Payne California Buckwheat



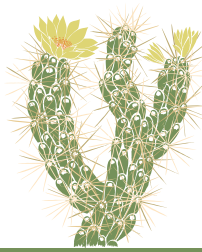


Botanical Name

Common Name

<i>Eriogonum giganteum</i> var. <i>giganteum</i>	St. Catherine's Lace
<i>Eriogonum grande</i> var. <i>rubescens</i>	Red-Flowered Buckwheat
<i>Eriogonum parvifolium</i>	Coast Buckwheat
<i>Eriophyllum confertiflorum</i>	Golden Yarrow
<i>Erythranthe</i> (<i>Mimulus</i>) <i>cardinalis</i>	Scarlet Monkeyflower
<i>Eschscholzia californica</i>	California Poppy
<i>Eschscholzia californica</i> var. <i>maritima</i>	Dune Poppy
<i>Festuca idahoensis</i>	Idaho Fescue
<i>Festuca rubra</i>	Red Fescue
<i>Fragaria chiloensis</i>	Coast or Beach Strawberry
<i>Fragaria vesca</i> 'Montana de Oro'	Montana de Oro Wood Strawberry
<i>Frangula californica</i> 'Eve Case'	Eve Case Coffeeberry
<i>Gilia capitata</i>	Globe Gilia
<i>Hesperocyparis forbesii</i>	Tecate Cypress
<i>Heteromeles arbutifolia</i>	Toyon
<i>Heuchera maxima</i>	Island Alum Root
<i>Juglans californica</i>	California Black Walnut
<i>Juncus patens</i>	Spreading Rush, Wire Grass
<i>Layia platyglossa</i>	Tidy Tips
<i>Leptosiphon grandiflorus</i>	Large-flowered Linanthus
<i>Leptosyne maritima</i>	Sea Dahlia
<i>Lessingia filaginifolia</i> 'Silver Carpet'	Silver Carpet California Aster
<i>Leymus condensatus</i> 'Canyon Prince'	Canyon Prince Wild Rye
<i>Lupinus bicolor</i>	Miniature Lupine
<i>Lupinus microcarpus</i> 'Ed Gedling'	Ed Gedling's Lupine
<i>Lupinus nanus</i>	Sky Lupine
<i>Lupinus succulentus</i>	Arroyo Lupine
<i>Lyonothamnus floribundus</i> ssp. <i>aspleniifolius</i>	Santa Cruz Island Ironwood
<i>Monardella villosa</i> 'Russian River'	Russian River Coyote Mint
<i>Muhlenbergia rigens</i>	Deergrass
<i>Nemophila menziesii</i>	Baby Blue Eyes
<i>Parkinsonia</i> (<i>Cercidium</i>) 'Desert Museum'	Desert Museum Palo Verde
<i>Penstemon</i> 'Margarita BOP'	Margarita BOP Foothill Penstemon
<i>Penstemon spectabilis</i>	Showy Penstemon
<i>Philadelphus lewisii</i> 'Goose Creek'	Goose Creek Mock Orange
<i>Pinus radiata</i>	Monterey Pine
<i>Pinus sabiniana</i>	Foothill Pine





Botanical Name

Common Name

<i>Platanus racemosa</i>	Western Sycamore
<i>Prunus ilicifolia</i> ssp. <i>lyonii</i>	Catalina Cherry
<i>Quercus agrifolia</i>	Coast Live Oak
<i>Quercus chrysolepis</i>	Canyon Live Oak
<i>Rhus integrifolia</i>	Lemonade Berry
<i>Rhus ovata</i>	Sugar Bush
<i>Ribes aureum</i> v. <i>gracilimum</i>	Golden Currant
<i>Ribes speciosum</i>	Fuchsia-Flowered Gooseberry
<i>Ribes viburnifolium</i>	Catalina Perfume
<i>Romneya coulteri</i>	Matilija Poppy
<i>Rosa californica</i>	California Wild Rose
<i>Salix laevigata</i>	Red Willow
<i>Salix lasiolepis</i>	Arroyo Willow
<i>Salvia</i> 'Bee's Bliss'	Bee's Bliss Sage
<i>Salvia</i> 'Mrs. Beard'	Mrs. Beard Sage
<i>Salvia leucophylla</i>	Purple Sage
<i>Salvia mellifera</i>	Black Sage
<i>Salvia spathacea</i>	Hummingbird Sage
<i>Sambucus nigra</i> ssp. <i>caerulea</i>	Blue or Mexican Elderberry
<i>Sisyrinchium bellum</i>	Blue-eyed Grass
<i>Trichostema lanatum</i>	Woolly Blue Curls
<i>Umbellularia californica</i>	California Bay Laurel
<i>Vitis californica</i>	California Wild Grape

