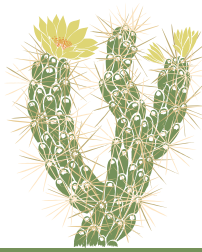




Theodore Payne Foundation

2019 PLANT LIST | provided by homeowner
Garden 29 in West Los Angeles



NATIVE PLANT GARDEN TOUR

Botanical Name

Common Name

<i>Acmispon glaber (Lotus scoparius var. scoparius)</i>	Deerweed
<i>Arctostaphylos manzanita 'Dr. Hurd'</i>	Dr Hurd Manzanita
<i>Arctostaphylos manzanita ssp. manzanita</i>	Common Manzanita
<i>Calystegia macrostegia</i>	Coast or Island Morning Glory
<i>Calystegia macrostegia 'Anacapa Pink'</i>	Anacapa Pink Island Morning Glory
<i>Encelia farinosa</i>	Brittlebush or Incienso
<i>Epilobium canum ssp. canum</i>	California Fuchsia
<i>Eriogonum fasciculatum</i>	California Buckwheat
<i>Eschscholzia californica var. maritima</i>	Coastal Poppy
<i>Gilia capitata</i>	Globe Gilia
<i>Heteromeles arbutifolia</i>	Toyon
<i>Lupinus bicolor</i>	Miniature Lupine
<i>Pycnanthemum californicum</i>	California Mint
<i>Rhamnus californica ssp. californica</i>	California Coffeeberry
<i>Rubus ursinus</i>	Pacific Blackberry
<i>Salvia apiana</i>	White Sage
<i>Salvia mellifera</i>	Black Sage



Theodore Payne Foundation for Wild Flowers & Native Plants
10459 Tuxford Street, Sun Valley, California 91352 | 818 768 1802

theodorepayne.org
nativeplantgardentour.org